



COUNTRY RESPONSE INFORMATION SYSTEM

version 1.0



UNGASS DATA ENTRY SOFTWARE: GLOBAL REPORTING 2008

SETUP NOTES

Prepared by UNAIDS Evidence, Monitoring, and Policy Department

UNAIDS

20, Avenue Appia
1211 Geneva 27
Switzerland

Tel. (+41) 22 791 1366 | Fax. (+41) 22 791 41 87

unaid@unaid.org | www.unaid.org

Table of contents

1.	SYSTEM REQUIREMENTS	4
2.	CONTENTS OF THE CD-ROM	5
	User Guides	
	Setup Notes	
	Help - Troubleshooting	
	Contact UNAIDS	
3.	INSTALLATION	7
4.	PROGRAM FILES	14

1. SYSTEM REQUIREMENTS

Before you begin to install the UNGASS Data Entry Software: Global Reporting 2008, verify that your system meets these requirements:

- Microsoft XP Professional Service Pack 2
- Pentium III 1 GHz or faster processor
- Approximately 600 MB of available disk space for a full install
- At least 1 GB of RAM
- Microsoft Internet Explorer 6, Mozilla Firefox 1.4 or higher versions as this is a Web application
- Microsoft Office 2000, XP or 2003 to open and save reports
- Adobe Acrobat Reader 5 or higher versions to open and save reports

The following software components are also required:

- Microsoft .NET Framework
- Internet Information Services (IIS)
- Microsoft SQL Server

If they are not already present on your computer, the Setup Wizard will install them for you.

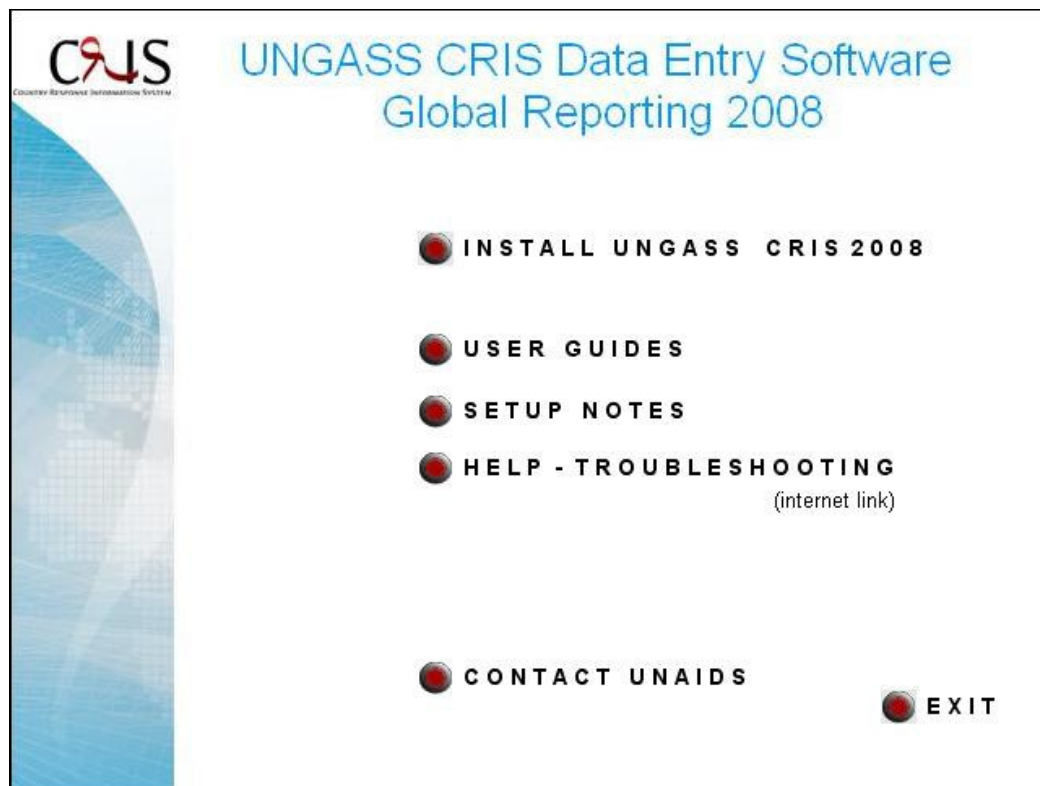
The various configurations supported by the software are outlined in the table below.

Operating Systems	Internet Information Services and Microsoft SQL Server
Windows 95, 98 or Millenium	Not supported.
Windows 2000 Professional	Contact UNAIDS.
Windows XP Professional	Supported or installed for you.
Windows XP Home	Not supported.
Windows 2003 Server	Supported if already installed. Otherwise, not supported.
Windows Vista	Contact UNAIDS.

Finally, you must be logged on as an administrator in order to install the UNGASS Data Entry Software on a given computer.

2. CONTENTS OF THE CD-ROM

Insert the UNGASS Data Entry Software CD-ROM into the drive on your computer.



If the CD-ROM does not start automatically, then use Windows Explorer to locate and double click the CD-ROM drive named UNGASS CRIS Data.

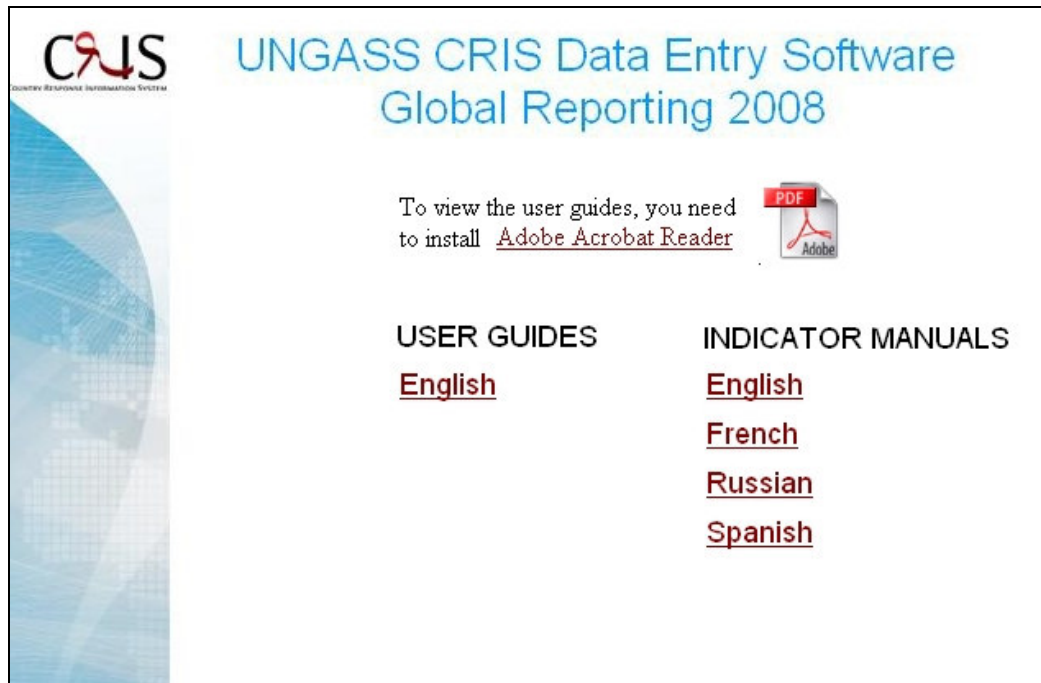
You can click **Exit** to close the CD-ROM at any time.

Several useful items are included on the CD-ROM in addition to the software: User Guides, Setup Notes, Help – Troubleshooting and Contact UNAIDS.

User Guides

PDF versions of the User Guide (instructions on using the software) and the Indicator Manual (i.e. the *Guidelines on Construction of Core Indicators*) are provided. Click **User Guides** to select and view the desired documentation. Use the print button in Adobe to make a printout.

Please note that Adobe Acrobat Reader 8 can be installed from the CD-ROM. Simply click the link on the User Guides screen. Alternatively, the English, French, Spanish and Russian versions are always available in Additional Installs (right click on the CD-ROM drive named UNGASS CRIS Data in Windows Explorer and then choose **Explore** to locate this folder).



Click **Main Menu** to go back to the contents of the CD-ROM.

Setup Notes

The Setup Notes (i.e. the document you are currently reading) describes the installation procedure. Click **Setup Notes** to view the document. Use the print button in Adobe to make a printout.

Help - Troubleshooting

If you are experiencing difficulties installing or using the software, please refer to the FAQ and latest troubleshooting notes to diagnose the problem. Click **Help – Troubleshooting** to visit the UNGASS Reporting 2008 website (http://www.unaids.org/en/Goals/UNGASS/2008_UNGASS_Reporting_FAQ.asp) and locate the information.

You can also get support by emailing UNGASSindicators@unaids.org. To report a technical problem, it is important to attach the troubleshooting logs.

For installation issues, the following logs should be sent:

- CRIS3_MSDE.log found in C:\Program Files\UNAIDS\CRIS UNGASS 08\
- Cris3.v1.yyyymmdd.log found in the Temp directory (type %temp% in the Address Bar of Windows Explorer to open this folder)
- ASPNETSetup_00000.log found in the Temp directory
- Redist.log found in the Temp directory

For software issues, send Exception.log found in C:\Program Files\UNAIDS\CRIS UNGASS 08\CrisSupport. You can also open the CrisSupport folder by going to **All Programs > UNAIDS > CRIS UNGASS 08 > Troubleshooting Logs** in the Windows Start Menu.

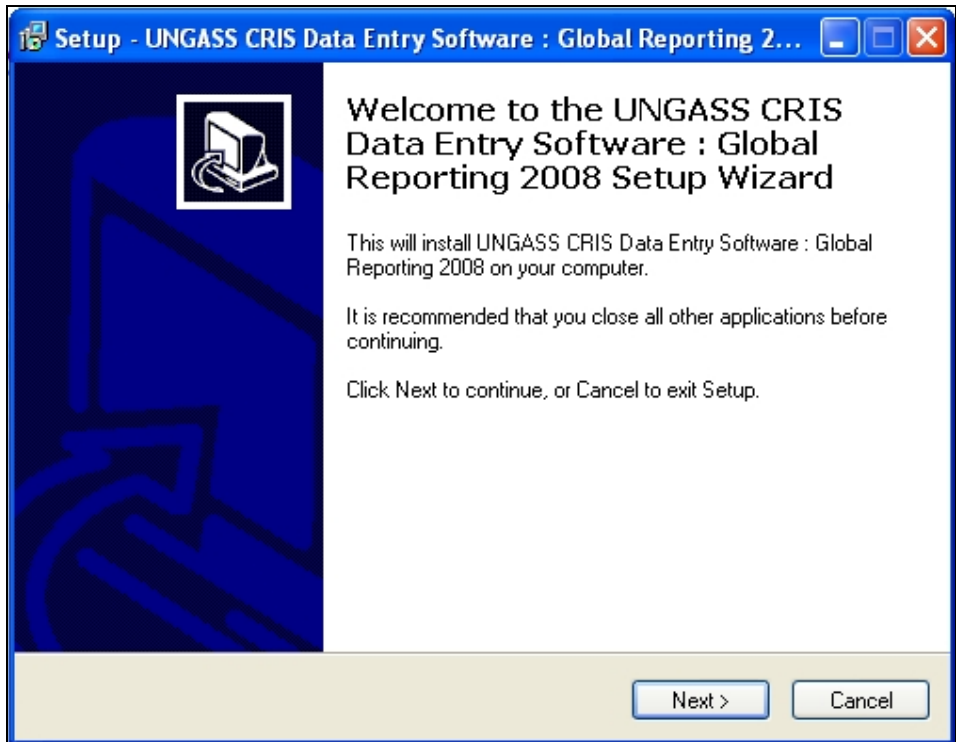
Contact UNAIDS

Click **Contact UNAIDS** to find out how to get in touch with UNAIDS Headquarters. Click **Main Menu** to go back to the contents of the CD-ROM.

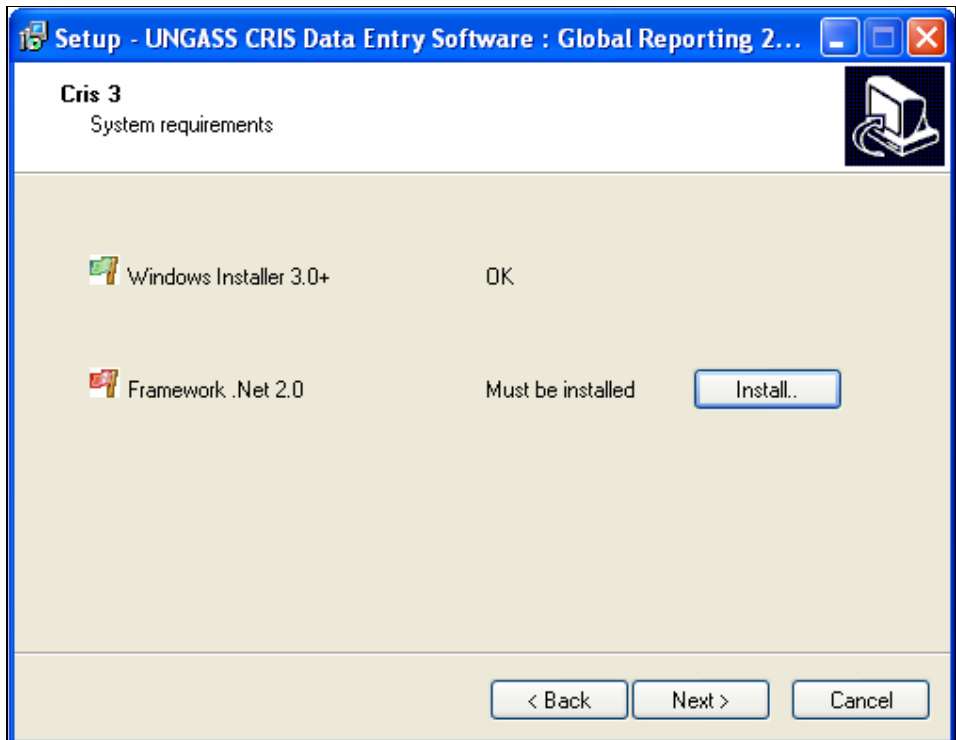
3. INSTALLATION

It is suggested that you close any other programs that may be running in the background of your computer. Once installation is started, you can either read the on-screen instructions or follow along below.

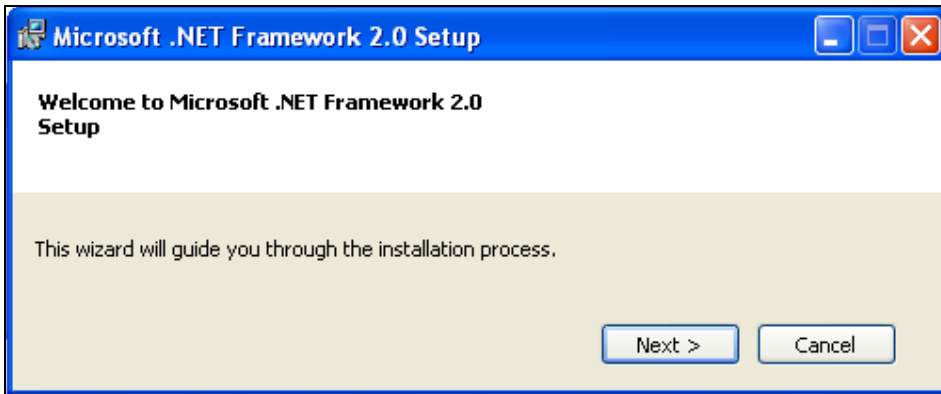
- 1 Click **Install UNGASS CRIS 2008** in Main Menu. If the Setup Wizard does not start automatically, then use Windows Explorer to locate and double click on the installer file (Setup.exe) on the CD-ROM.



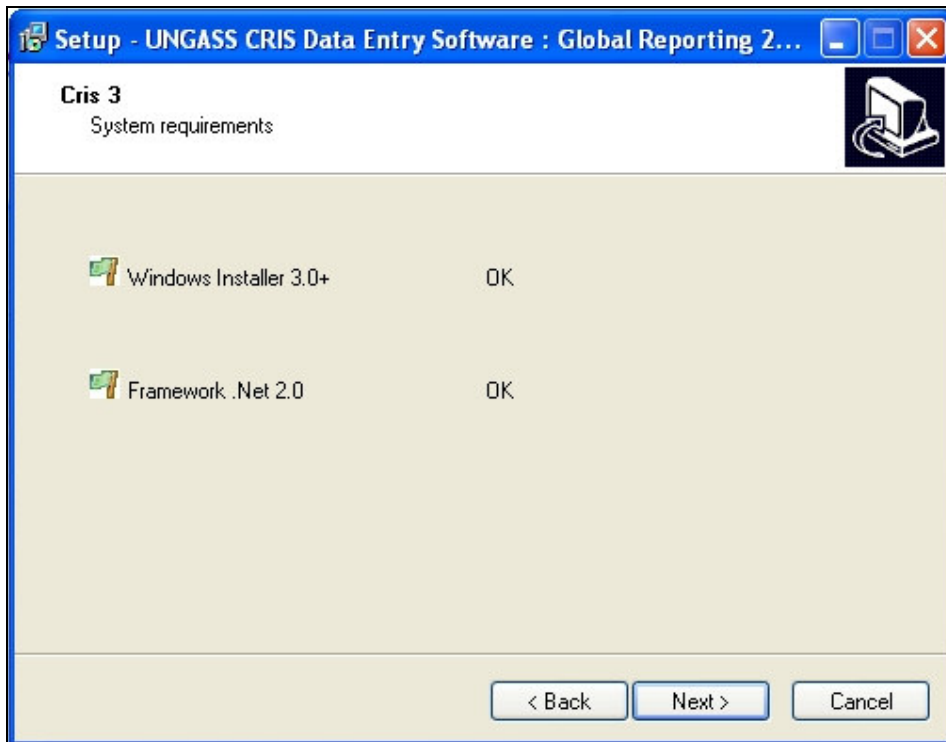
- 2 Click **Next**. A system check is first done to determine whether your computer meets certain software requirements or not.



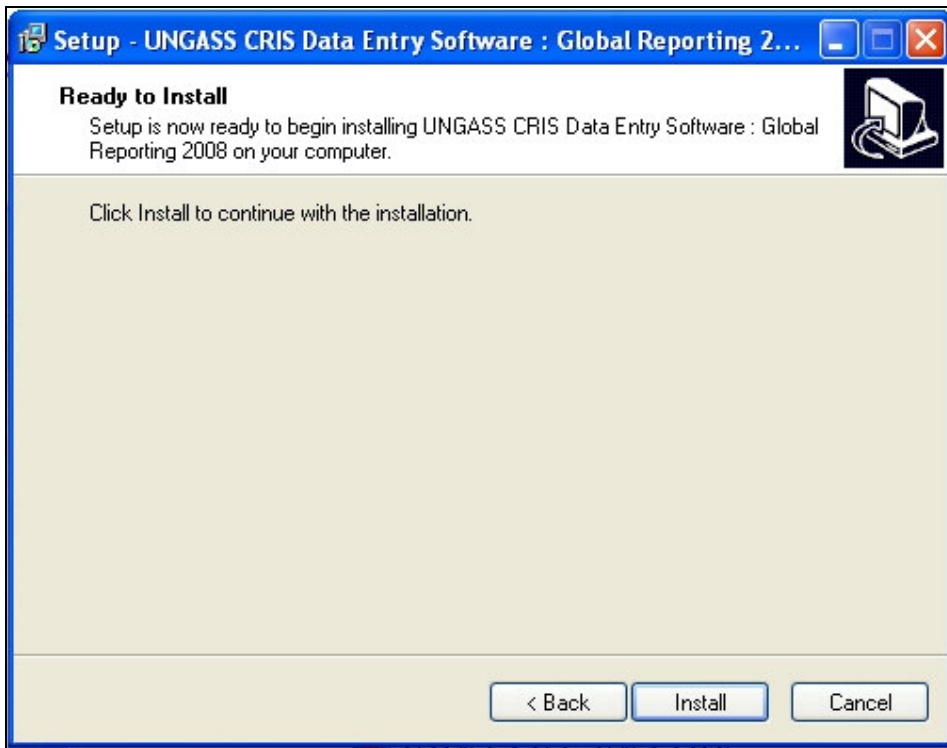
A red flag displays next to Windows Installer 3.0, Microsoft .NET Framework 2.0, or both if they are not already installed on your computer. Both components have to be installed successfully in order to continue and Windows Installer must be installed first when both are missing. Click **Install**. The .NET Framework 2.0 has its own Setup Wizard as shown below:



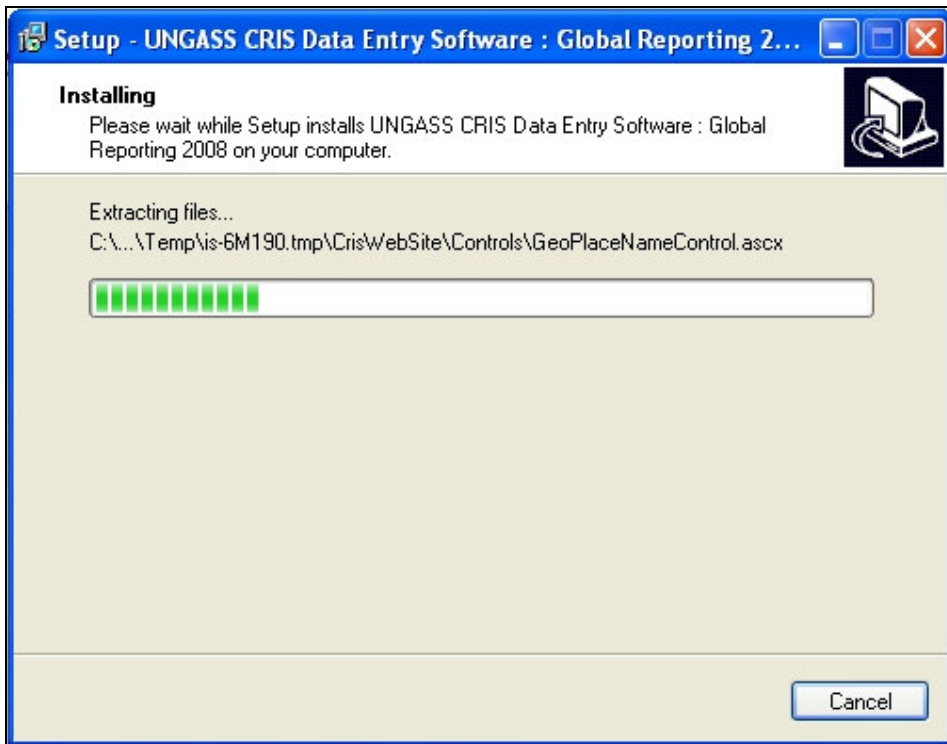
Click **Next**. Then click **Yes** in the successive windows (i.e. accept the End-User License Agreement from Microsoft) until the setup finishes. Once the .Net Framework 2.0 installation has successfully completed, the UNGASS CRIS Setup Wizard displays two green flags.



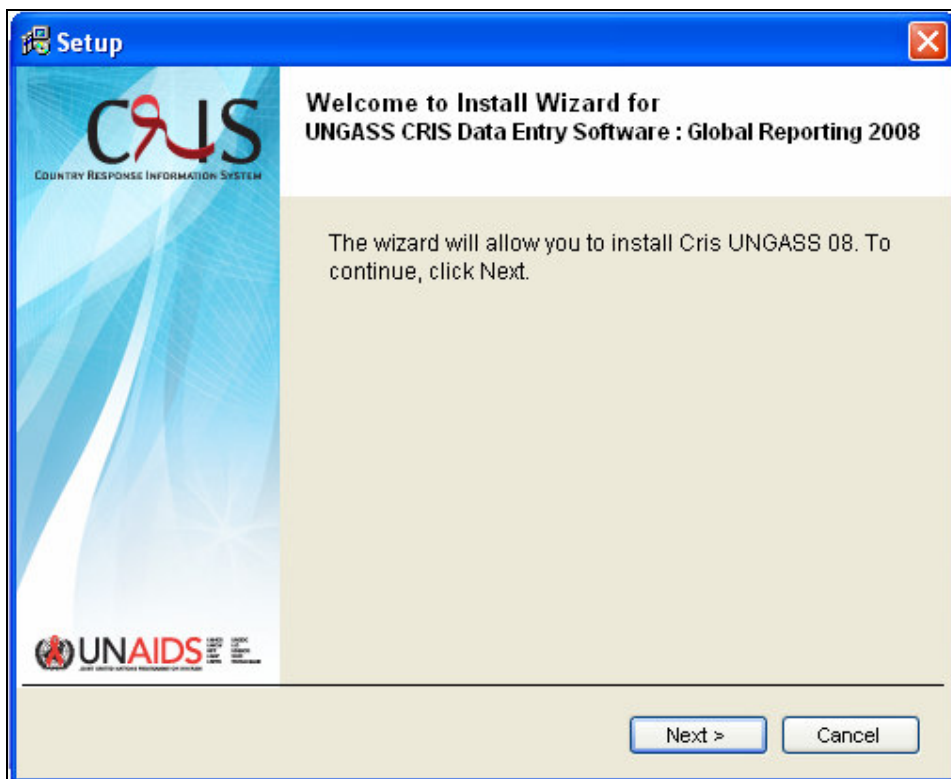
3 Click **Next**.



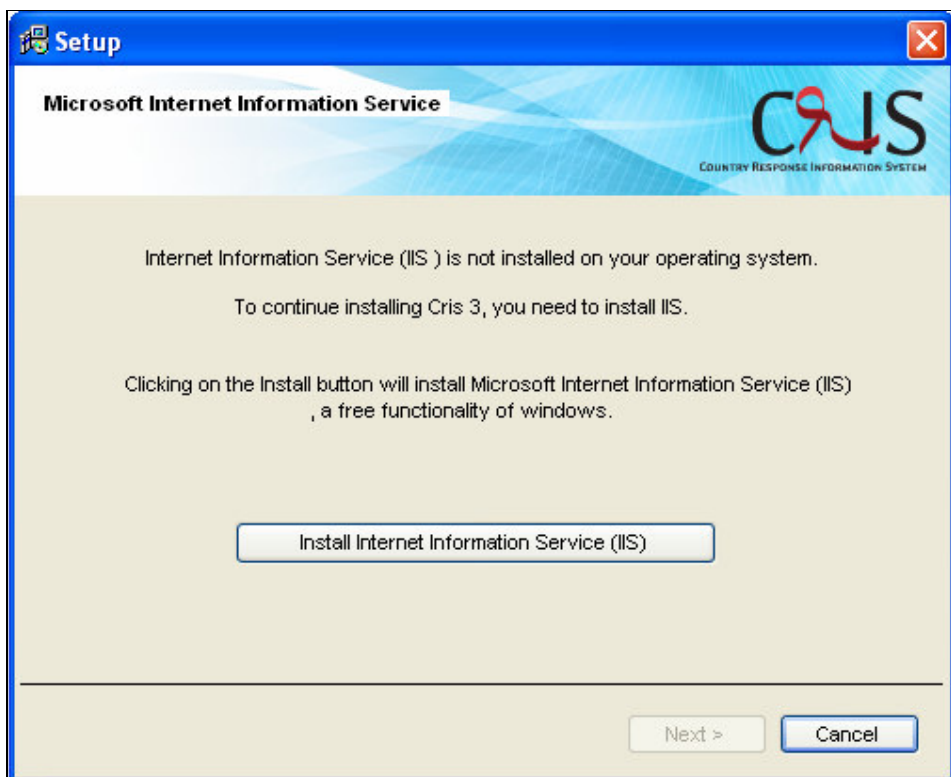
4 Click **Install**. The Setup Wizard copies files and prepares to install the UNGASS CRIS application.



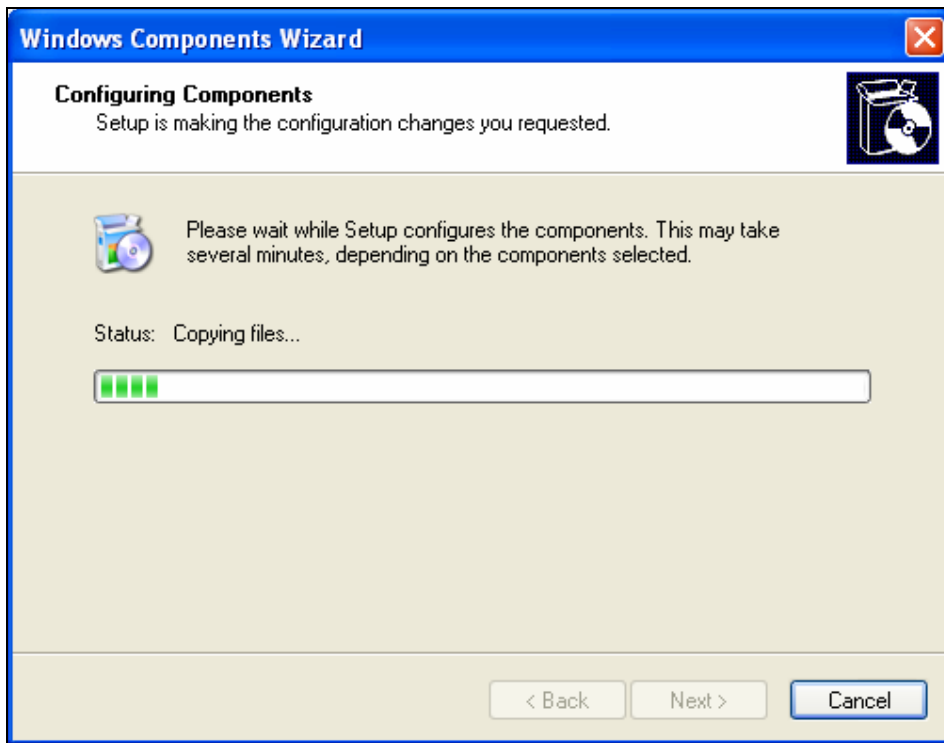
After a few minutes, the UNGASS CRIS Setup Wizard appears:



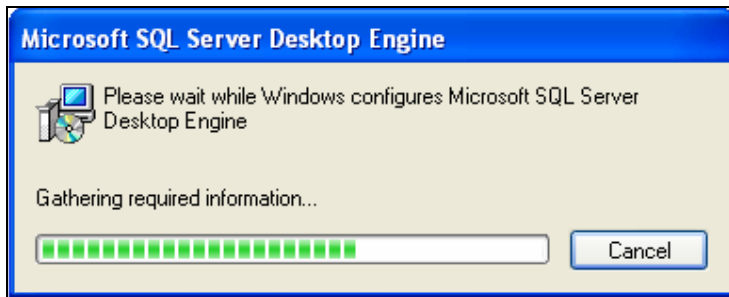
- 5 Click **Next** only once. It is normal that several windows will flash across the screen since the wizard is automated to facilitate setup. At this point, Internet Information Service and Microsoft SQL Server Desktop Engine (MSDE) will be installed if they are not found on your computer.



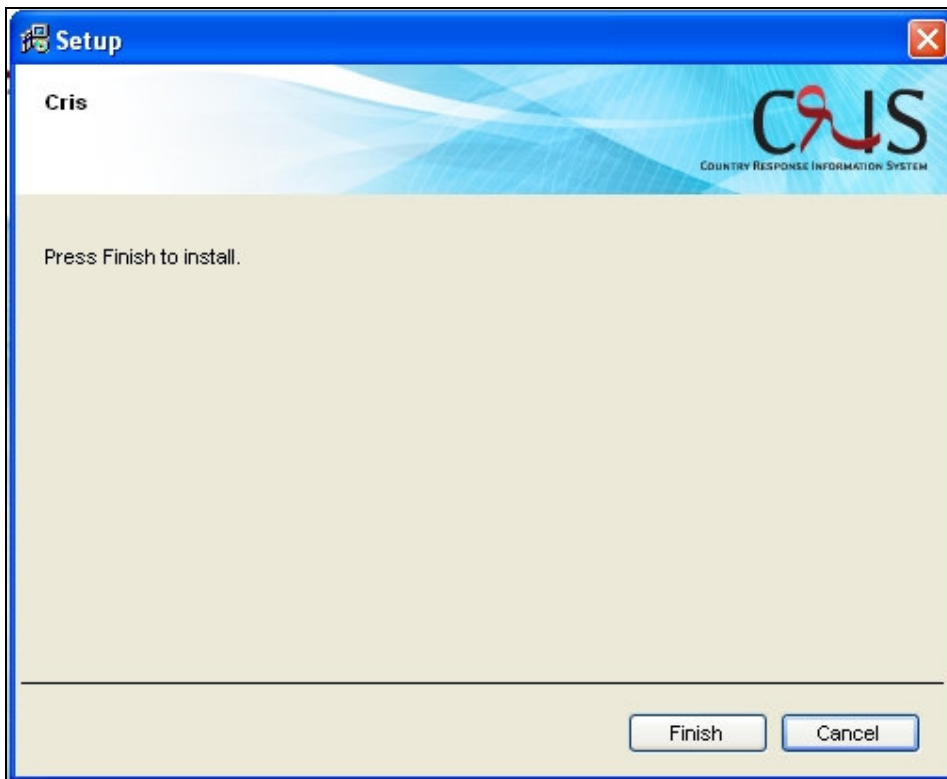
For example, Click **Install Internet Information Service (IIS)**. It is important to let these required software components be installed successfully (i.e. do not click Cancel). Otherwise, you will need to restart the full installation.



Please wait while the Windows Components Wizard configures Internet Information Services.



You will also have to wait while Windows configures Microsoft SQL Server Desktop Engine.



- 6 Click **Finish**. Please be patient while the final installation processes are performed. When the installation is successful, the following message will appear:



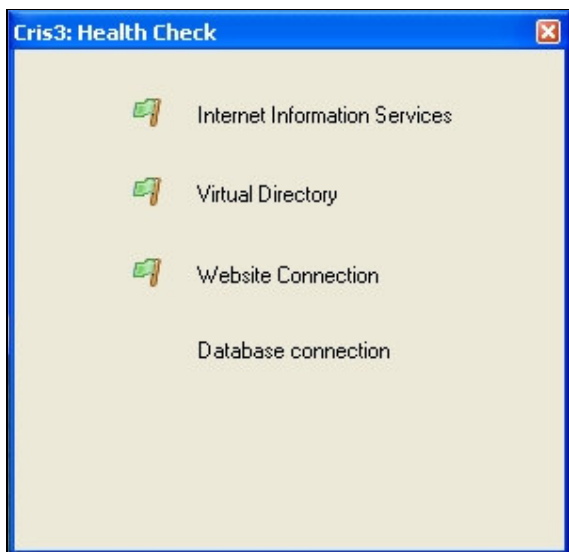
- 7 Click **OK**.



8 Click **Finish** to close the Setup Wizard. The Launch CRIS UNGASS 08 shortcut is now on your desktop.



Each time you click the desktop shortcut to start the software, a series of health checks (i.e. the monitoring of system availability and reliability) are carried out. The window looks like this and closes automatically when all is well:



4. PROGRAM FILES

Upon installation, the UNGASS CRIS Data Entry Software: Global Reporting 2008 creates a new folder within the Program Files folder.

Go to **C:\Program Files\UNAIDS\CRIS UNGASS 08** to view this folder in Windows Explorer.

Subfolders	Contents
\CrisData	The compressed data file named export_<Country>_<timestamp>.cris3z to be sent to UNAIDS as part of the Country Progress Report.
\CrisSupport	Troubleshooting logs.
\CrisWebsite	Main application files.
\CrisWebsite\Files\BlankPDF	Blank PDF indicator data entry forms.
\Data	Database files (Cris UNGASS 08.mdf and Cris UNGASS 08_Log.ldf)
\Documentation	User Guide and Indicator Manuals.
\HealthCheck	Administration tools such as HealthCheck and the Database Management Tool.
\HealthCheck\Backup	Database backups (.bak files).

Shortcuts

In addition to the one on the desktop, shortcuts to the UNGASS CRIS application are also provided in the Windows Start Menu.

Go to **All Programs > UNAIDS > CRIS UNGASS 08 >**

- **Launch Cris:** Starts the UNGASS CRIS software
- **Troubleshooting Logs:** Opens the CrisSupport folder where the log files are located
- **Database Management:** Starts the CRIS Database Management Tool. Refer to the User Guide for more information about managing the database.
- **Help & Troubleshooting** Links to the UNGASS Reporting 2008 website (http://www.unaids.org/en/Goals/UNGASS/2008_UNGASS_Reporting_FAQ.asp).
- **Uninstall:** Removes the UNGASS CRIS software from your computer

Database Connectivity

The UNGASS CRIS application uses the first SQL Server instance found on the computer, if any. If not installed, Microsoft SQL Server Desktop Edition (MSDE) is installed as the **CRIS3_MSDE** named instance. If you have an earlier version of CRIS on your computer, the **CRIS21_MSDE** instance is re-used. To connect to the UNGASS CRIS 08 database, use this information:

- **Server name:** (local)\CRIS3_MSDE ... or (local)\CRIS21_MSDE ... or (local)
- **Database name:** Cris UNGASS 08
- **User Id:** CrisUser UNGASS 08 - **Password:** CrisPassword UNGASS 08
- **CRIS3_MSDE sa password:** Y9a+K9cy

If you wish to connect to the Cris UNGASS 08 database using other management tools, use this default connection string:

```
Data Source=(local)\CRIS3_MSDE;Initial Catalog=Cris UNGASS 08;user id=CrisUser UNGASS 08;password=CrisPassword UNGASS 08;
```

